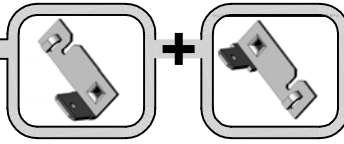
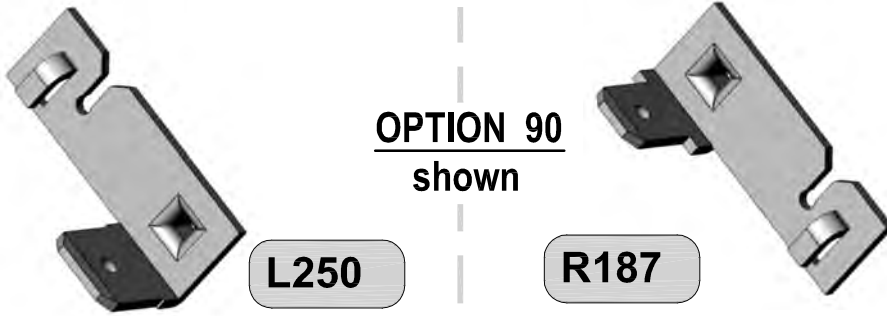


# L250 + R187

Terminal

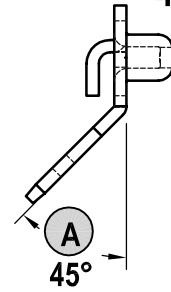


Terminal



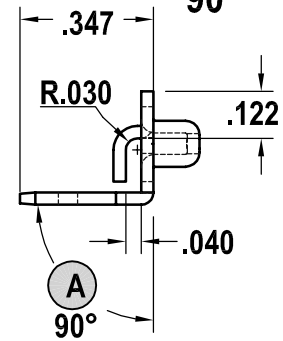
**OPTION 45**

45°



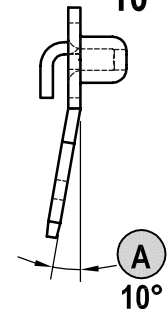
**OPTION 90**

90°



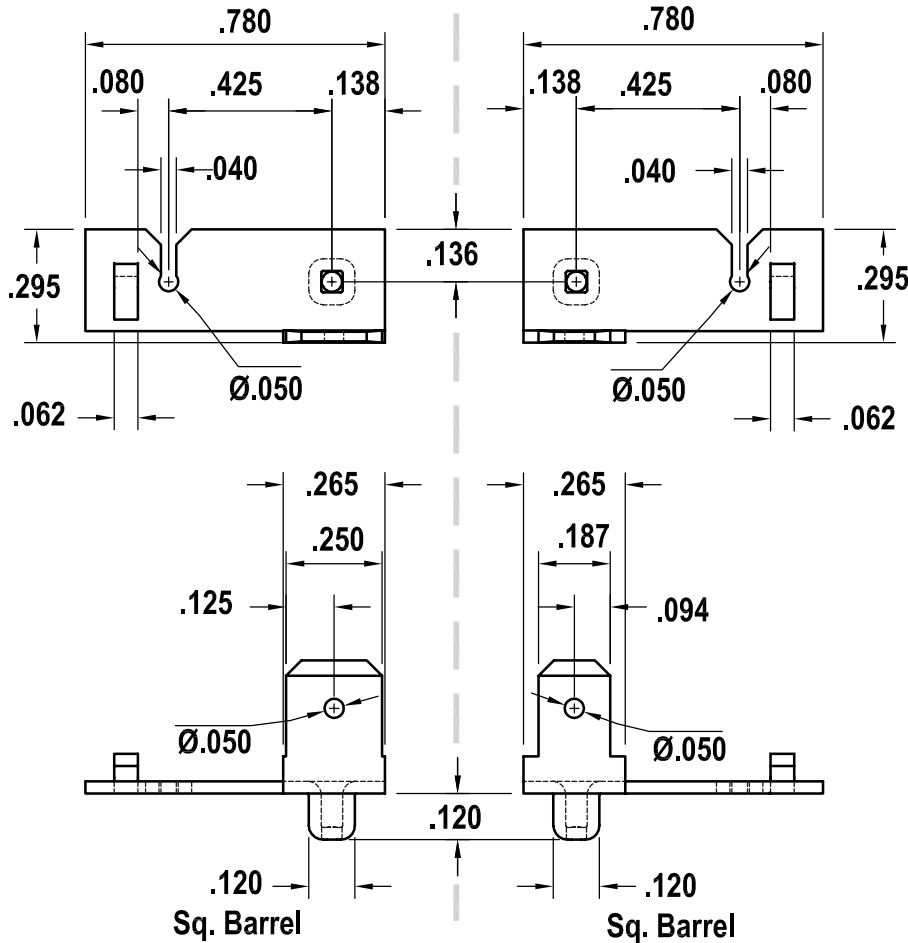
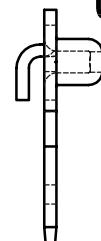
**OPTION 10**

10°



**OPTION 0**

0°



SCALE: 2:1

PART NUMBER	MATERIAL BRASS	OPTION	∠ Angle (A)
L250	.032	0	0°
		10	10°
R187	.032	45	45°
		90	90°

NOTE: PARTS MUST BE ORDERED IN SETS