



Amity Die & Stamping Co.



1005+1007+1097

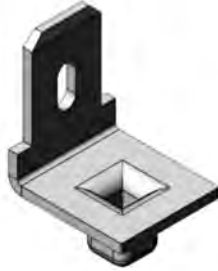
+

1098+1103+1104

Terminal



OPTION 1
Flat



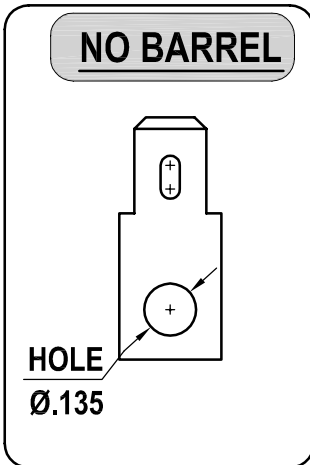
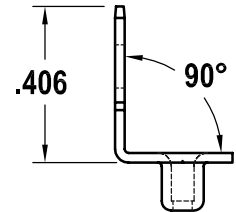
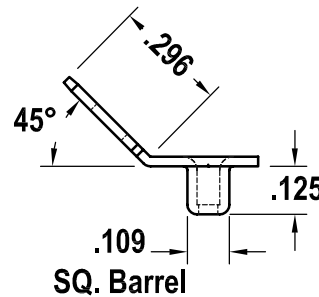
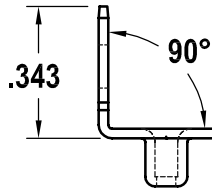
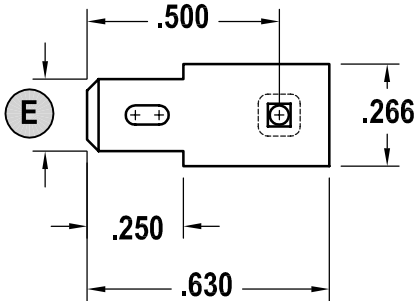
OPTION 3
90° - short



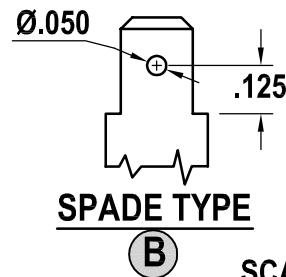
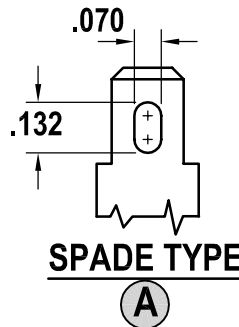
OPTION 5
45°



OPTION 7
90° - long



WITH BARREL - as shown



SCALE: 2:1

PART NUMBER	MATERIAL BRASS	OPTION	SPADE TYPE	< FORM	Length	E
1005	.018	1	A	Flat		.187
		2	B	Flat		.187
		3	A	90°	.343	.187
1097	.020	4	B	90°	.343	.187
		5	A	45°		.187
		6	B	45°		.187
1098	.025	7	A	90°	.406	.187
		8	B	90°	.406	.187

PART NUMBER	MATERIAL BRASS	OPTION	SPADE TYPE	< FORM	Length	E
1007	.018	1	A	Flat		.205
		2	B	Flat		.205
		3	A	90°	.343	.205
1103	.020	4	B	90°	.343	.205
		5	A	45°		.205
		6	B	45°		.205
1104	.025	7	A	90°	.406	.205
		8	B	90°	.406	.205

Terminal