

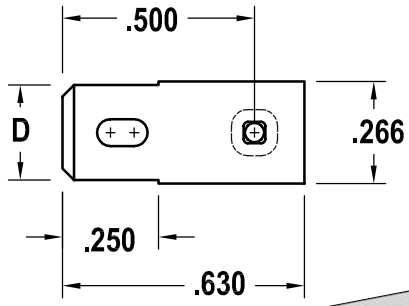
1038+1039+1040



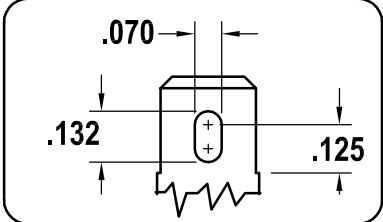
Terminal

Terminal

OPTION 1 Flat

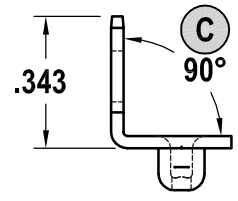


SPADE TYPE (A)

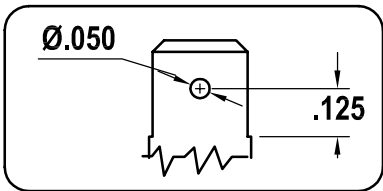


WITH BARREL - as shown

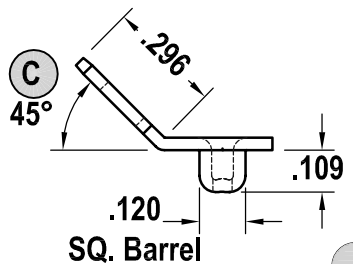
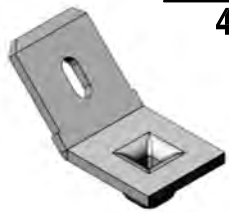
OPTION 3 - short 90°



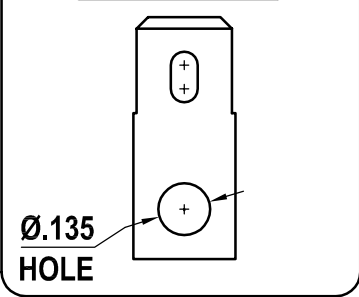
SPADE TYPE (B)



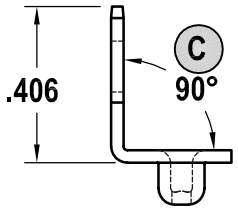
OPTION 5 45°



NO BARREL



OPTION 7 - long 90°



SCALE: 2:1

PART NUMBER	MATERIAL BRASS	OPTION	SPADE TYPE	LENGTH	FORM (C)	(D)
1038	.032	1	A		Flat	.187
		2	B		Flat	.187
		3	A	.343	90°	.187
		4	B	.343	90°	.187
		5	A		45°	.187
		6	B		45°	.187
		7	A	.343	90°	.187
		8	B	.343	90°	.187
		9	B		19°	.187
		10	B		15°	.187

PART NUMBER	MATERIAL BRASS	OPTION	SPADE TYPE	LENGTH	(C)	(D)
1039	.032	1	A		Flat	.205
		2	B		Flat	.205
		3	A	.343	90°	.205
		4	B	.343	90°	.205
		5	A		45°	.205
		6	B		45°	.205
		7	A	.406	90°	.205
		8	B	.406	90°	.205

PART NUMBER	MATERIAL BRASS	OPTION	SPADE TYPE	LENGTH	(C)	(D)
1040	.032	1	A		Flat	.248
		2	B		Flat	.248
		3	A	.343	90°	.248
		4	B	.343	90°	.248
		5	A		45°	.248
		6	B		45°	.248
		7	A	.406	90°	.248
		8	B	.406	90°	.248