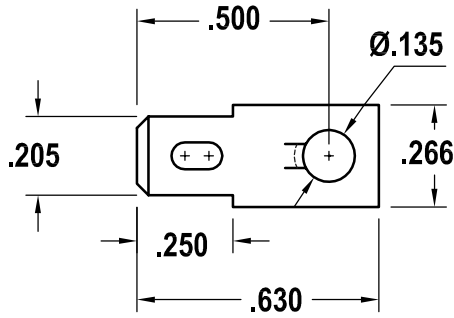
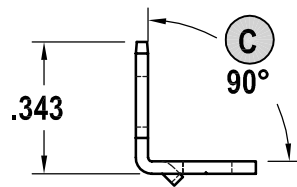


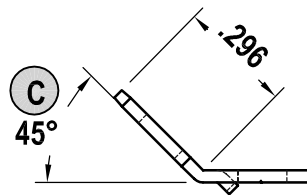
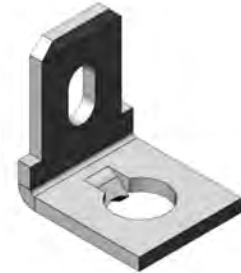
Terminal



OPTION 1
Flat



OPTION 3
90°

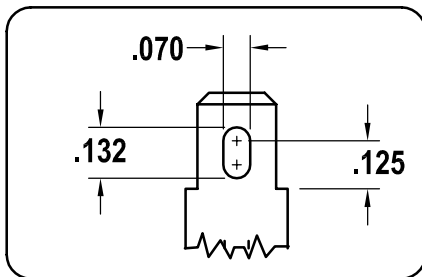


OPTION 5
45°



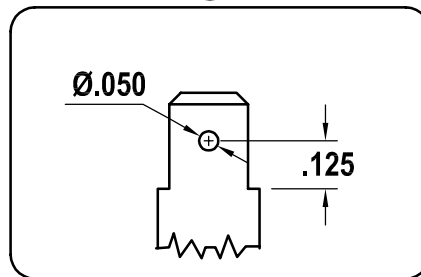
SPADE TYPE

(A)



SPADE TYPE

(B)



SCALE: 2:1

PART NUMBER	MATERIAL		OPTION	SPADE	Angle
	BRASS	STEEL			(C)
1048	.032	.032	1	A	Flat
			2	B	Flat
			3	A	90°
			4	B	90°
			5	A	45°
			6	B	45°